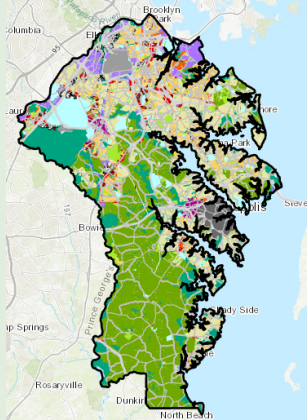




# Growth Action Network

of Anne Arundel County, Inc.

P.O. Box 748 • Arnold, MD 21012



## First Plan2040 draft has been released for public comment

October 13, 2020

### The first draft of Plan2040 is available for citizen review

*Planned growth rates and lack of growth controls seem contrary to citizen desires.*

The first draft of Plan2040, the new General Development Plan will be available for public review and comment until November 15. The draft Plan can be viewed and downloaded at [THIS WEBPAGE](#). It contains many good policies for environmental protection and redevelopment of decaying neighborhoods. However, it is built around the assumption that the rate of population growth and residential development will continue at approximately its current level for the next 20 years. Although most new development would be directed to town centers and transit-oriented locations, no mechanisms are proposed for local control over rates and types of growth.

Plan2040 also proposes aggressive recruiting of commercial enterprises in the designated redevelopment and targeted new growth areas. Particular emphasis is given to areas near Ft. Meade. GAN members may want to question this emphasis, since this type of commercial growth brings few benefits to current residents of the County.

Review of the Plan2040 draft will require some time and effort. However, Plan2040 will influence a great deal of following legislation. **Please take time to read through the draft and provide feedback and comments to the County.**

---

### Ag Tourism properties would have thousands of neighbors

*Bill 69-20 should be given special attention by citizens living in all districts.*

**Bill No. 68-20, “Farm Alcohol Production” and Bill No. 69-20 – “Farm or Agricultural Heritage Site Stays and Special Events”** were heard on Oct 5. These Bills are a result of recommendations of the AACo Agricultural, Farming and Agritourism Commission. Bill 68-20 is viewed as a consolidation of other farm alcohol bills and was passed without amendment.

Bill 69-20 was modified with three minor amendments and will be heard again on Oct. 19. Both bills could directly benefit several members of the Ag Commission and will apply to more than 650 RA, RLD, and R1 agricultural properties distributed throughout the County. More than 50,000 residences are within one mile of an affected property. Most of the ag properties are in the southern part of the County, but every Council district contains hundreds to thousands of neighboring residences. Click to view a [GIS map of affected properties](#).

In spite of the obvious potential for unforeseen consequences and neighborhood annoyance, Bill 69-20 is receiving little close review by most of the Council members. **The GAN Legislative Committee urges all members to express their views on this bill to their Council representative and provide written or oral testimony for the Oct. 19 Council meeting.** Click [HERE](#) for preformatted email information and click [HERE](#) for preformatted Council testimony.

---

### **[Meet Our Member: Crofton First, Inc.](#)**

Crofton First, Inc. serves Crofton, Gambrills and surrounding towns that are along the Route 3 corridor (everything between 450 and 97).

Since our start in 2006 we have successfully stopped Walmart from building on non-tidal wetlands in Crofton, have assisted homeowners in Gambrills with fly ash contaminated drinking water, and most recently stopped The Enclave at Crofton development from being approved for building as they were asking the county for modifications and not following environmental guidelines.

However, we still face great challenges as our part of the county has been marked for developmental growth, is already suffering from sprawl, and we are constantly asking the county to stop approving development in our area until the infrastructure can handle it.

We were so happy to join GAN 5 years ago. It is great to have a group of people who “get it” and whom we can get advice from and collaborate with.

Crofton First, Inc.

"Promote Sustainable Growth"

[croftonfirst@gmail.com](mailto:croftonfirst@gmail.com)

<https://croftonfirst.weebly.com/>

Find us on Facebook: <https://www.facebook.com/croftonfirst>

---

### **[A Great Resource for your community - AAC WaterShed Academy Groves of Gratitude Initiative](#)**

Thanks to the County’s Replant Anne Arundel partners, WSA’s Groves of Gratitude initiative provides county residents with single native trees and pre-designed, native tree bundles to plant on their properties this fall. Benefits?

- Provides you and your property with benefits such increasing pollinator habitat, screening from roads or neighbors, shading for more efficient energy usage, and/or providing a sustainable food source. See the website for a full list of trees and packages.
- Supports a neighbor in need with your donation. 50% of the proceeds will benefit the [Center of Help](#), to provide relief to families across Anne Arundel County who are experiencing health, housing and food insecurity due to the COVID-19 pandemic. Remaining proceeds will contribute to [WSA's Impact Fund](#).

County residents can place orders through Monday, October 26th.

For more information about this program, visit <http://aawsa.org/groves-of-gratitude> or contact [Grae \(Alyssa\) Brummit](#) to see full list of trees

---

### Coming meetings and events

- Oct 19, 6 pm – County Council meeting (virtual)
  - Oct 21, 10 am – GAN Board meeting (virtual)
  - Nov 2, 6 pm – County Council meeting (virtual)
  - Nov 15 - Final day for submission of Plan2040 comments
- 

[Website](#) [About Us](#) [Join GAN](#) [Calendar](#) [Contact](#)



---

Growth Action Network | 5545 Nicole Drive, Arnold, MD 21012 410-544-1454

[Unsubscribe {recipient's email}](#)

[Update Profile](#) | [About our service provider](#)

Sent by growthaction.adm@gmail.com